

## ONCOLOGY

- ⦿ Initial staging
- ⦿ Restaging
- ⦿ Treatment response
- ⦿ Follow-up
- ⦿ Metabolic biopsy

## CARDIAC

- ⦿ Viability
- ⦿ Myocarditis
- ⦿ Sarcoidosis
- ⦿ Infective endocarditis

## ORTHOPEDIC

- ⦿ Osteoid osteoma
- ⦿ Infected prosthesis
- ⦿ Osteomyelitis
- ⦿ Graft viability

## NEUROLOGY

- ⦿ Epilepsy
- ⦿ Brain Tumour
- ⦿ Dementia
- ⦿ Paraneoplastic syndromes

## INFECTION & INFLAMMATION

- ⦿ Pyrexia of unknown origin (PUO)
- ⦿ Infected implants/grafts
- ⦿ Immuno-compromised patients
- ⦿ Tuberculosis
- ⦿ Sarcoidosis
- ⦿ Plaque imaging
- ⦿ Vasculitis
- ⦿ Inflammatory bowel disease (IBD)

# TYPES OF PET SCANS PERFORMED

- ⦿  $^{18}\text{F}$ -FDG PET Whole body scan
- ⦿  $^{18}\text{F}$ -Fluoride Bone Scan
- ⦿  $^{18}\text{F}/^{68}\text{Ga}$  PSMA PET
- ⦿  $^{68}\text{Ga}$  DOTANOC PET
- ⦿ Other Gallium - Labelled molecules
- ⦿ Radio tracers for Brain Tumour Imaging
- ⦿  $^{18}\text{F}$ -DOPA (For Parkinson's disease)



 Contact: +91 7338992222  
Toll-free number: 18605002850

 Email: [apcc@apollohospitals.com](mailto:apcc@apollohospitals.com)

 Website: [apolloproton.com](http://apolloproton.com)



Accuracy Beyond Imagination

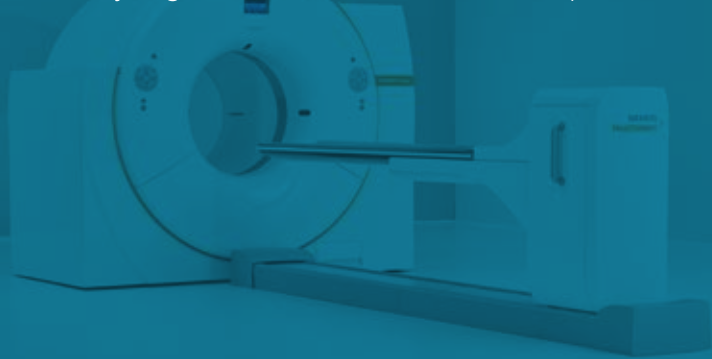
**DIGITAL  
PET-CT**  
FIRST IN SOUTH ASIA



Organization Accredited  
by Joint Commission International

The Department of Nuclear Medicine at Apollo Proton Centre is equipped with the most advanced, state-of-the-art Digital PET-CT scanner, the first of its kind in entire South Asia. The fastest time of flight technology and digital detectors offers high resolution and sharp crystal clear images with an ability to detect lesions as tiny as 1-2 mm in size at lesser imaging times and injected doses thereby imparting lesser radiation exposure to patients. The equipment also boasts of wide-bore gantry which makes the scan seamless for less claustrophobic experience and large-sized patients. The newer reconstruction techniques allow scans to be completed almost twice as fast as the other conventional analog PET-CT systems.

PET-CT is an established integral part of cancer management and plays a dominant role right from staging to treatment response assessment and follow up of patients. The accuracy and resolution help in offering personalized cancer care to each individual by analysing the behaviour of cancer in depth.



## Exclusive Features of Digital PET-CT

- ⊙ **Fastest**
  - Less than 10 minutes for whole body scan
- ⊙ **Safest**
  - Lowest radiation exposure
- ⊙ **Smallest**
  - Can pick up even 2 mm lesions compared to analog PET
- ⊙ **Highest Sensitivity**
  - 50% to 60% more pick-up
- ⊙ **Clearest**
  - True 3D image quality

## Advantages of Digital PET-CT

- ⊙ **Wide gantry bore size (78 cm)**
  - It provides 25% more space compared to other PET-CTs to reduce claustrophobia and improves patient experience
  - Even large sized patients can be imaged easily
- ⊙ **Simultaneous contrast enhanced 192 slice**
  - Whole body CT with metabolic information
- ⊙ **Short imaging time**
- ⊙ **Early detection of small lesions**
- ⊙ **Accurate staging and restaging of cancers**
- ⊙ **Accurate quantification of tumor metabolism before and after treatment**